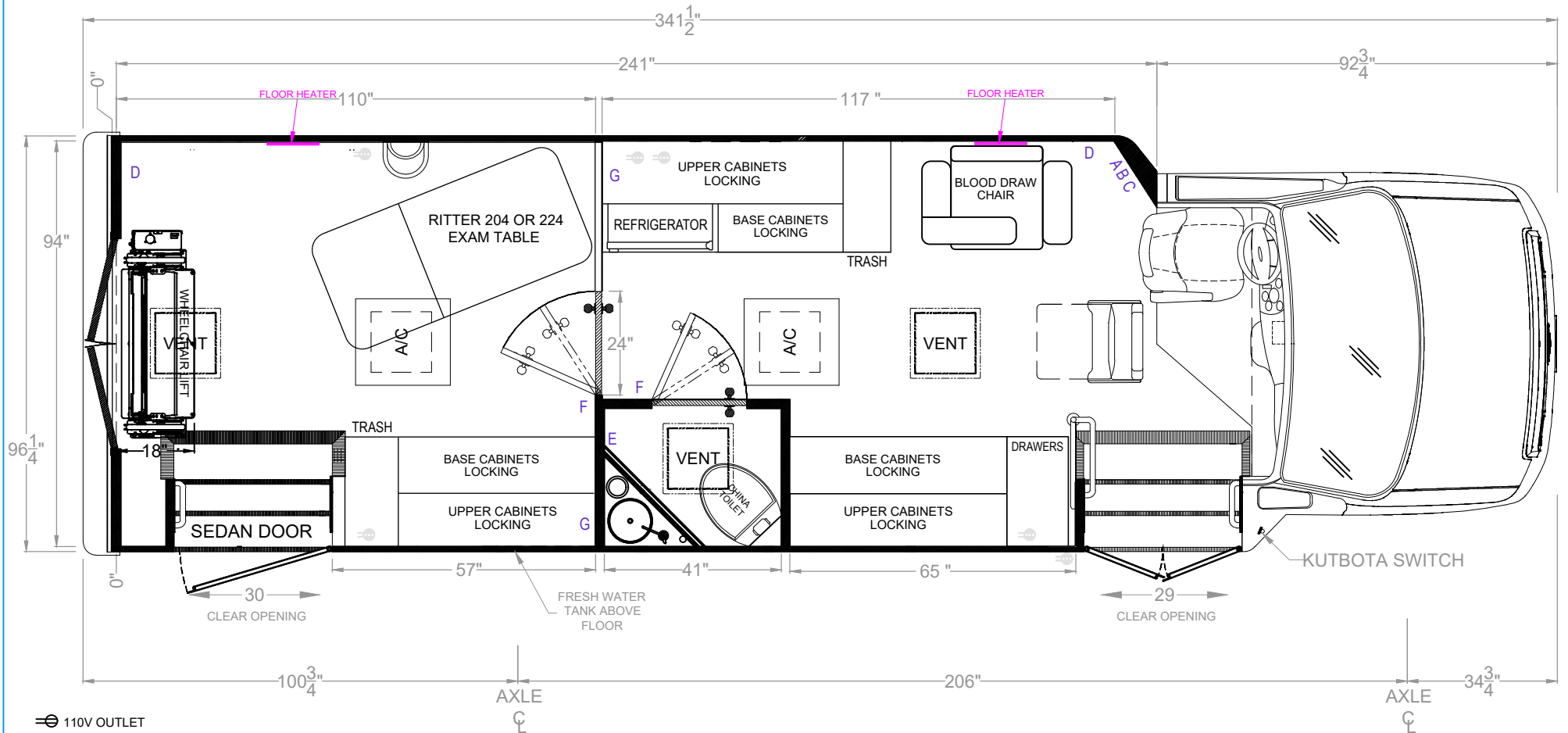


PRELIMINARY FLOORPLAN



⊖ 110V OUTLET

■ OPTIONAL EQUIPMENT

- A GENERATOR REMOTE START SWITCH
- B INVERTER POWER SWITCH
- C KEY BOX
- D COAT HOOK
- E HAND WASH & SANITIZER
- F DOOR STOPPER
- G HAND SANITIZER
- * LED LIGHTS UNDER UPPER CABINETS
- * 6 LED DOME LIGHTS (4"x11")



MobileTesting
Clinic.com

855.376.9797 • inforequest@mobiletestingclinic.com

2 Room Mobile Health Unit Final floorplan subject to engineering approval

BODY MODEL: TERRA TRANSIT			OVER ALL LENGTH: 28'5.5"		CHASSIS MAKE: FORD E-450	
DRAFTSMAN: AMP	REVISION: E011022	SCALE: DNS	DIMENSIONING TOLERANCE = +/- 3"		FLOOR LENGTH: 241"	CHASSIS FUEL TYPE: GAS
					CHASSIS GVWR: 14,500 lbs.	